

## Welcome from Dan Morrow

### Trust Leader and Chief Executive Officer

We have been through more in 18 months as a Trust, as a Society and as a Country and we now see real glimmers of hope that not just recovery but also regeneration and renewal are central to how we build back. We have huge opportunities within our areas to ensure that we truly prioritise opportunity, innovation and growth. We are implementing new approaches to the way we support our young people across our Primary and Secondary schools to ensure that entitlement, enrichment and excitement are programmed into everything we offer.

On that note, we are thrilled that we will be working in partnership with the new A30BC provision to enhance our vocational offer and ensure that courses and skills that are directly applicable to employment and training are given a real focus. There remain additional opportunities at the new Business Centre, please see later on in this newsletter.



## Holsworthy Schools Celebrate Easter Success!

Schools across Holsworthy are reflecting on a hugely successful Holiday and Activities and Food (HAF) programme, which provided nearly 50 students with an engaging and eclectic set of activities throughout the first week of the Easter holidays. The government-backed scheme, which provides healthy food and enriching activities during the school holidays.

This was rolled out and supported by staff from a range of schools within Dartmoor Multi Academy Trust, with additional support by the brilliant staff at Holsworthy Primary and Okehampton Community Recreation Association (OCRA) to provide a range of activities for students including archery, football, computer coding and arts-based pursuits.

Above all, the programme was a heartening community effort, with Waitrose kindly donating chocolate prizes for each child, and local caterers ensuring that every child received a cooked meal at the end of their activities. Holsworthy Rural Transport made sure travel was not a barrier to accessing the camp



**Jules Ruddick, Trust Champion for Dartmoor Multi Academy Trust, said:** "It was just fantastic to see and feel the buzz of this activities programme. Smiles, laughter, teamwork and so much more. From the children to the staff (from the school and OCRA) it was a top effort."



**Dan Morrow, CEO and Trust Leader for Dartmoor MAT, said:** "I am extremely proud of the way in which the Holsworthy community came together to provide this fantastic package for so many students. Our schools have always been an important part of their respective communities, and, in line with the Co-operative Values which our Trust is built on."

## AWE Projects

### Awe...Wonder...Engagement

Our series of AWE Projects commenced in the Easter Holidays when Trust Staff (both from our Schools and in our Central Teams) gave up some of their holiday and weekends to work hard on some exciting projects. Schools had thought carefully about what small improvements could be made to brighten the children's surroundings and welcome them back after such a difficult time.

The AWE (Awe, Wonder, Engagement) Project is about capturing the AWE and Wonder in every opportunity to extend children's learning and engage in projects between schools, their children and families, and with the community and local businesses. This was a continuation of the strong community spirit which had been evidenced during lockdown.



Our grateful thanks go to local businesses: DIY Supplies Home Hardware, Tom Davies at T J Davies General Maintenance and Dulux, Travis Perkins, Tamar Trading, RGB, ATS Euromaster and the



Garden Shop Garden Centre for donations which included paint, bark chippings, seeds, stones, fencing and tyres. The tyres were painted and used for seats and planters at Boasley Cross

Primary School, paint was used at South Tawton to paint the school railings and Bridestowe Primary School were busy making improvements to the offices and staff rooms, along with the EYFS external play area and our Environmental site.

Tania Skeaping, Chair of Trustees said 'Special thanks to our caretaking team who spent hours assembling 3 flat pack mud kitchens for Boasley Cross; we hope that the children have enjoyed playing in the wonderful kitchen area that Dan, our CEO created for them.'



EXBOURNE C of E PRIMARY SCHOOL



Northlew C of E  
Primary School



Boasley Cross Primary School

Okehampton College

BRIDESTOWE PRIMARY SCHOOL



LYDFORD SCHOOL





### Okehampton College

Staff in the Humanities department supported the charity Islamic Relief and their campaign of cakes4Syria. This is to help those lives that have been disrupted by war and also for us as a department we were marking the end of Ramadan enjoying chocolate Ramadan cake.



### St James C of E Primary School

Our Reception Class are very interested in learning about vintage cars. We have been making comparisons between the past and present. This has led to lots of imaginary play; the children worked co-operatively to build a class car.



We watched clips of Chitty Chitty Bang Bang and the children are now experimenting with ideas to make their own junk modelling cars fly. We have enjoyed writing notes to Chitty Chitty Bang Bang, labelling our models and working collaboratively.



### Exbourne C of E Primary School

We are living our school values - LIVE, LOVE, LEARN - 'Let us spur one another to acts of love and good deeds' Hebrews 10:24 and exploring some big questions in collective worship. Children have been excited to share their 'I wonder' thoughts and feelings as well as demonstrate their acts of love and kindness.

### Bradford Primary School

A fantastic start to our Wildtribe Ranger Day! We made a Wildtribe pledge, painted faces and discussed what makes a good leader. We enjoyed practising our whittling to make totem pole name tags. More fire building, toasting bread, flora identification and making fossils of the leaves. Later on that day, we had a go at some den building! Huge thanks to Kayleigh from Arena for coming out and providing the children with such a fantastic opportunity.



### Spring by Rose Doran

Primary Poet Laureate for our Trust

Spring starts out as nothing  
Then flowers sprout and bloom  
Chicks hatch and appear  
Suddenly, Spring is here

Birds sing with joy and happiness  
As the fish swim and splash  
Bird fly in the sky as quick as a flash  
Spring carries on

Lambs are being born  
Waiting for the new dawn  
With the raging storms gone  
Caterpillars are changing

Springs end is near  
Thankfully, Summer has welcomed us in  
Until next year  
We will miss you dearly Spring



### South Tawton Primary School

We are delighted to have taken delivery of two beautiful, custom-made friendship benches and a story-telling throne. The benches were funded by the sales of our incredible Lockdown Cookbook. The idea is simple - if a child feels lonely, they can go to the bench as a signal that they need someone to play with. Another child will see them, go and talk to them and include them in their games.



### Bridestowe Primary School

This term we have felt the beginnings of a return to normality as we have welcomed Ranger Rob and his Forest School for all classes. Children enjoy these very much and love to learn and create in the fresh air. We have begun swimming lessons again for the first time since March 2020 and are very proud of the progress the children are making.

### Highhampton Primary School

The children have been enjoying 'Wheelie Wednesday' where they use scooters and balance bikes to practice their skills in our wonderful outdoor space. This complements our PE and after school provision, now ranging from Gardening and Needle Craft to Multi-Skills.



### Holsworthy Community College

On 15 April, HCC's show jumping team rode classy rounds at the NSEA show jumping at Bicton Arena, and the early start was well worth it when the judge announced that they had taken 2nd place, ahead of teams from Maynard and Millfield School. This meant qualification for the National Championships at Hickstead at the end of July.



## **BUSINESS CENTRE FOR THE OKEHAMPTON AREA**

The A30 Business Centre offers a mix of light industrial units and modern office accommodation for established and start-up businesses in Okehampton

# A30BC

the A30 business centre



As at March 2021



Artist's impression

### **1)The purpose of this newsletter is :-**

- a) To serve as a first step in the information on this new facility
- b) To recognise the people of the Okehampton area as being the priority for this site. Wider marketing will not occur until mid/late June.
- c) To provide the opportunity for parents, wider family and friends of Okehampton College students – past, present and future –to register an interest for the priority Open Days from mid-June until mid-July. Priority registrations will be invited to visit the site and discuss in detail availability and site features.

### **2)Location**

The Industrial Park is being developed on the East side of Okehampton. The nearby new station, Okehampton Parkway, is planned in 2 or more years. This Industrial Park will have one of the best locations in the South West.

### **3)The Charitable Trust**

One of the sites is being developed by a new local Charitable Trust – Okehampton Skills and Sports Trust,(Oke SAS). This site will be the main element of the 'Skills' objective of the Trust. The site has been named the A30BC –the A30 Business Centre – stressing the superb location. This project has been developed in conjunction with Okehampton College Governors and Managers, and numerous local businesses.

### **4)Site Summary**

The site will have 2 multi – unit buildings. The First building is nearing completion and will be available for occupation within the next 2/3 months. The Second building is expected to come on stream mid 2022.



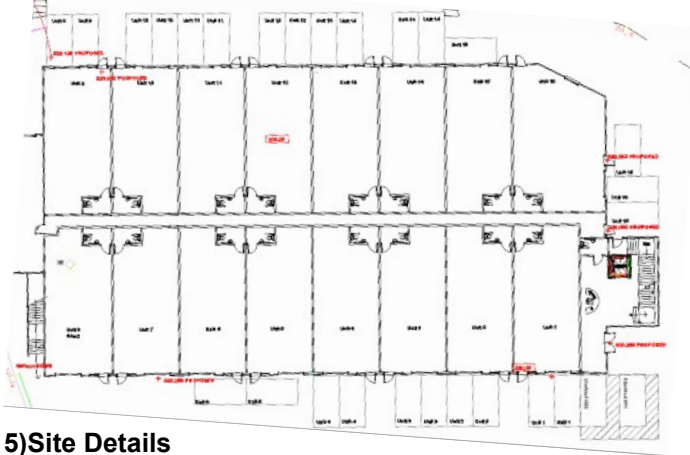
As at March 2021



Artist's impression

## FIRST BUILDING

Ground Floor



First Floor



### 5) Site Details

**A) First Building** – some 3,200 sqm, over 2 floors, comprises:-

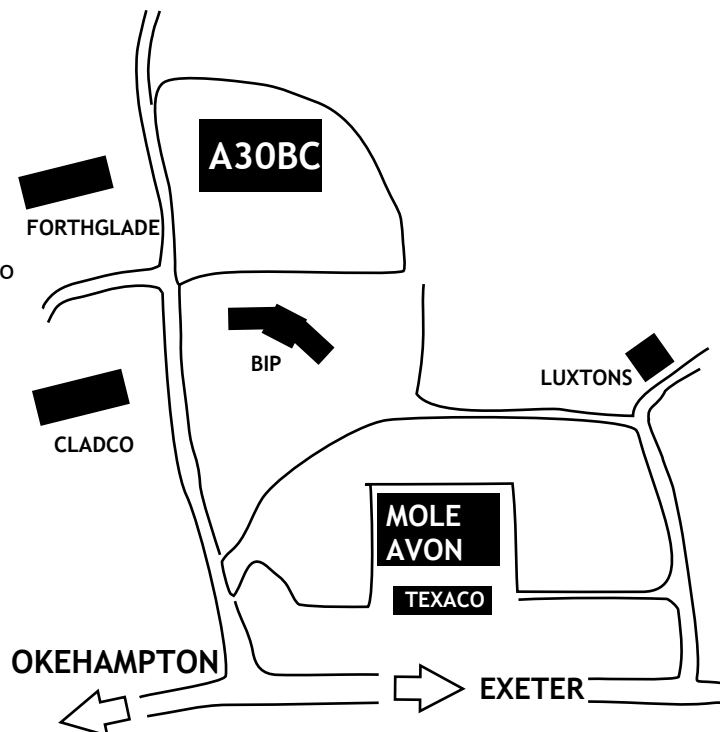
- i) 16 ground floor units, mainly 850sq ft (79sq m), with 2 car parking spaces immediately adjacent. These are primarily for sale separately, on a 99 years lease, with an option of a maximum of a second unit. Initially, a 3 year rental may be alternatively available.
- ii) The outer areas of the first floor will provide 36 separate offices, for rental. A maximum of 4 offices per business has initially been set to encourage the maximum number of individual businesses on this site. One parking space will be included with the rental of each office.
- iii) The central area of the 1st floor, under a large glass atrium, will be available for:-
  - a) small business development and mentoring
  - b) networking space – for all site businesses; suppliers; customers –with admin support and refreshment facilities.
  - c) bookable space for small meetings and hot-desking
- iv) Passenger lift

**B) Second building** - 24 light industrial units. Details are being finalised and will reflect ideas from discussions on the first building.

### 6) Business Training –

A key objective of this site is appropriate business training in conjunction with Okehampton College -as follows:-

- A) Additional NVQs – an NVQ centre is already on site at the College. It has been agreed with the College that additional NVQs, mainly of a light industrial nature, need to be provided as an essential feature of the education of all college students. These will include brickwork, blockwork, stonework, rendering, plastering, artexing, studwork, plasterboarding, vehicle maintenance, plumbing and electrical skills.
- B) Close links and projects with the Business Studies Department at the College.
- C) Organisation of work placements and apprenticeships, as required.
- D) Mentoring of embryonic and new businesses.



FIND OUT MORE – LOG ON AT **A30BC.COM** and sign up for our newsletter, tell us which property you are interested in and your preferred date on viewing.

OPEN DAY – SITE VIEWING STARTING IN JULY. ANY FRIDAY 4pm or 5pm and ANY SATURDAY 9am or 10am.