

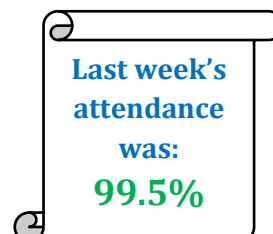


Mrs Janine Cook – Head of School,
Northlew & Ashbury C of E Primary School,
Northlew, Okehampton, Devon,
EX20 3PB.
Tel - 01409 221420
E-mail: admin@northlew.devon.sch.uk
Website: www.northlew.devon.sch.uk



Newsletter

Friday 31st January 2020



Dear parents/carers,

A massive thank you to all those parents who came to see Mrs Lee and myself this week. Your child will come home with a copy of the targets we have set so that you can support them with their learning at home. A further meeting will be held in March. We will let you know nearer the time.

A group of children in class 2 have begun running their own mini business enterprise with our school tuck shop open every Wednesday. The children will be responsible for stock taking and managing their own budgets as well as applying their maths to real life money situations. The tuck shop will be open from 3:20 to accommodate those children who are staying for the Art club and open at 3:30-3:45 for everyone else. It has been agreed by the School Council that all profits raised from the tuck shop will go towards our garden project.

Our class music lessons have begun at the beginning of term and both classes are thoroughly enjoying using the wide range of instruments the school already have. The children have been composing pieces of music following different rhythms and beats. We hope that the children will be able to share the various pieces they have developed with you towards the end of the spring term.

As I mentioned last week in the newsletter, we will be starting a parent's mathematics workshop after the half term holidays. We hope that parents will be able to attend each Friday and find the strategies and equipment we use in school a helpful tool for supporting their children with their maths learning at home. A sign-up sheet is available in the school office, please come along.

Hope you have a lovely weekend,
Mrs Cook

Remember to book your child's school dinners for the coming week

School Diary

February 2020

Monday – 3rd	Running after-school club (KS2), 3:30-4:30pm
Tuesday – 4th	KS1 Clive Pig workshop- am Hannah out of school- all day Yoga after-school club, 3:30-4:30pm (yr1-6)
Wednesday – 5th	Supply teaching KS1- all day Arts & Crafts after-school club, 3:30-4:30pm (yr1-6) Tuck Shop , 3:30-3:45pm
Thursday – 6th	Forest School with Mr Thomas- KS2 am & KS1 pm Martial Arts Grading club, 3:30-4:30pm (yr1-6) *Yr6 Primary School Quiz at Okehampton Primary, 6pm
Friday – 7th	KS2 Trip to Yeovilton Fleet Air Arm Museum Mr Thomas teaching KS1- all day Celebration Assembly at 3.10pm CANCELLED

* You will have been notified by text if your child has been invited to take part in this event. Please confirm their attendance in School Gateway.

Running Club

Running club will take place on the following Mondays:-

February- 3rd, 10th, 24th

March- 2nd, 16th, 23rd

April- 20th

There are some dates where in order for the club to go ahead, we require parent volunteers (*These dates are highlighted red*). If we don't have parent volunteers for the dates in red, due to health & safety we will not be able to run the club on those afternoons. If you can help out with any of these sessions, please get in touch. On 24th Feb & 23rd March we plan to take the children to Boasley Cross Primary to practice running on their track in preparation for the cross country event at the beginning of the summer term. Keep an eye on your messages as we will notify parents who have booked their children onto the club by text if it has to be cancelled.



Yr6 Primary School Quiz

Reminder: The quiz is taking place on Thursday 6th February, 6pm at Okehampton Primary School.

Good luck team Northlew!

KS2 School Trip- Fleet Air Arm Museum

Friday 7th Feb

The coach will be departing school at 8am so please make sure your class 2 **child arrives in school at 7:45am** to be registered. All children will need a packed lunch, drink and to be in full school uniform. A maximum of £5 per child can be taken (in a wallet or named envelope), to be spent in the gift shop at the end of the visit. We will be departing the museum at 3pm so hope to **return to school by 4:30pm**. Parents/carers will be notified by text if we're running behind schedule.



Arts & Crafts Club

Booking will open at **2pm on Monday (3rd)** for the next 4 sessions of this club. This will only be available to children who are NOT currently attending the club and should there still be space available we'll open it up to all. Please remember to make the £8 payment within the 'payments' section of School Gateway and then book your child onto the individual club sessions afterwards. **Your child will only be guaranteed a place once payment has been received.**



Times Tables Rock Stars

We have purchased a subscription to 'Times Tables Rock Stars' to provide all children in school, **free of charge** access in school and at home. Children were sent home with a letter last week, which contained their individual login details. You can access TT Rock Stars online by visiting www.ttrockstars.com or by downloading the APP. If you have any problems logging in from home, please speak to Hannah.

Times Tables Rock Stars is a carefully sequenced programme of daily times tables practice.

Each week concentrates on a different times table, with a recommended consolidation week for rehearsing the tables that have recently been practised every third week or so.

This format has very successfully boosted times tables recall speed for hundreds of thousands of pupils over the last 8 years in over 14,000 schools - both primary and secondary – worldwide.



Country Lanes Garden Centre, Okehampton for your kind donation of £30 worth of seeds. This will really help our school garden flourish this spring/summer.

QUESTION OF THE WEEK

Do you use manipulatives within your maths learning?



93% (38/41) of our children at Northlew said YES they do use manipulatives within their maths lesson.

7% (3/41) of our children at Northlew said NO they don't use manipulatives within their maths lesson.

All children in class 1 said that using manipulatives as it helps them to understand their maths learning better. The 3 children in class 2 who didn't use manipulatives said they felt confused and were confident to solve problems without them.

BACK TO SCHOOL

PARENT SESSIONS

An interactive 30 minute session

The first two weeks will look at supporting children with understanding and recording in calculations in reception, year 1 & 2. Week 3 and 4 will focus on KS2 and the use of various equipment to support; calculations, fractions, decimals and percentages.

Would you like to support your child with maths at home?

Why not come along to our 4 week **MATHEMATICS** Workshop?

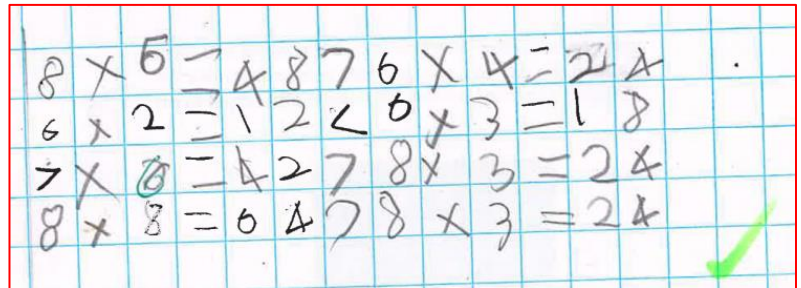
80% Sessions will begin after half term on Friday 28th February from 2:30-3:00pm in the School Hall

SUPER LEARNERS OF THE WEEK



Class 1

Hannah has made great progress in all areas of the curriculum and uses and applies her phonics knowledge and understanding to read new books.



Class 2

Harry showed some fantastic understanding in maths this week and was able to explain this concept clearly to another child, ensuring that they understood his explanation. Well done Harry!

Christian Ethos-‘Friendship’

Class 1

Darcie has been a kind friend by sharing equipment with others and ensuring that others take turns, making it fair for everyone.



Class 2

Max often displays thoughtful, friendly behaviour both to his peers and staff. He always offers to assist bringing equipment in from the playground and gives support to others if they are upset. Keep up this supportive behaviour Max!



NSPCC

Number Day 2020

&



Friday 14th February

Number themed **NON-UNIFORM** Day- £1 donation to raise funds for the NSPCC.

School Council/Ethos Group **CAKE SALE**

Donations of homemade or shop bought bakes would be greatly appreciated!

(Please leave donations in the school kitchen on Friday morning)

On this day there will be a focus on maths: interactive games and problem solving activities and there will be maths based competitions for class 1 & 2 with small prizes for the winners, which will be announced during our last celebration assembly of this half term.